

6530 Grinder Mixer • Features • Specifications

Tank and frame

Capacity of mixing tank:	165 bu. / 206 cu. ft.
Height (with tire size):	126 in.
Width with auger feeder:	114 in.
Overall length:	175 in.
Weight:	5150 lbs.

Discharge auger

Auger diameter:	9-3/16 in.
Auger tube diameter:	10 in.
Horizontal operating arc:	225°
Vertical operating arc:	+46° to -27° or 60° to -11°

Auger feeder

Auger length:	100 in.
Auger diameter:	10 in.

Mixing auger

Auger width:	12 in.
Mixing base:	24 in.

Supplement hopper

Auger diameter:	7 in.
Hopper size:	21 in. x 24 in.

Hammermills

Reversible hammers:	96
Width of mill:	Full 26 in.
Screen area:	780 sq. in.
Operating speed:	540 or 1,000 RPM
Operating speed of mill:	2,800 to 3,000 RPM
Screen sizes available:	1/8, 5/32, 3/16, 1/4, 5/16, 3/8, 1/2, 5/8, 3/4, 1, 1-1/4, 1-1/2 and 2 inch

Type drive: 6 double banded 3V belts for 540 or 1,000 RPM

Power required 80-160 HP

Unloading Auger Configuration	Tube & Elbow Combined Length (10 ft./12 ft.)	Discharge at 46° High Angle Vertical Height (10 ft./12 ft.)	Discharge at 60° High Angle Vertical Height (10 ft./12 ft.)
Standard 10 ft. or 12 ft. Long Discharge Tube — No Extensions	11 ft. 5 in./13 ft. 5 in.	16 ft. 10 in./18 ft. 3 in.	18 ft. 6 in./20 ft. 3 in.
3 ft. Auger Extensions	14 ft. 5 in./16 ft. 5 in.	19 ft. 0 in./20 ft. 5 in.	21 ft. 1 in./22 ft. 10 in.
6 ft. Auger Extension	17 ft. 5 in./19 ft. 5 in.	21 ft. 2 in./22 ft. 7 in.	23 ft. 8 in./25 ft. 5 in.

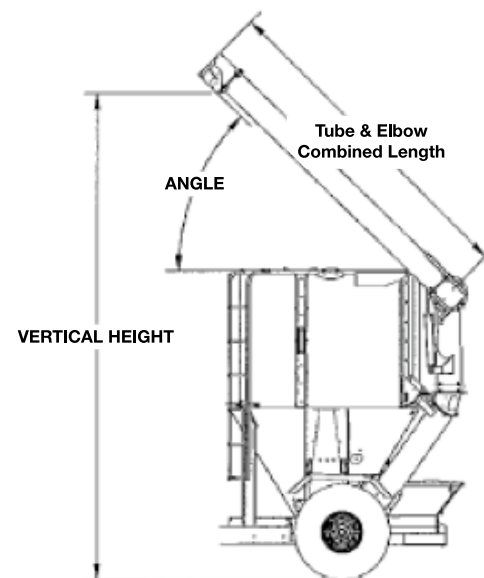
Standard features:

Choose from Tractor operated hydraulics or Self-contained hydraulic system with wireless remote control operation.

- 165 bushel tank
- 10 in. diameter x 12 ft. long hydraulic discharge auger with hydraulic lift cylinder
- Electric tank unload gate
- Five large inspection windows in tank
- Tongue jack
- Highway light kit and safety chain
- Ladder
- Fenders
- 13.50 x 16.1 - 8 ply tires
- Throat magnet #4, 24 in.
- Ingredient supplement hopper
- Heavy duty implement drive line
- Weigh bars and spindles

Six optional features:

- Hydraulic auger feeder
- Swing arm scale support
- Scale Indicator
- Folding or bolt-on discharge auger extensions
- Hammermill screens
- Hydraulic roll feed



Art's Way

Since 1956



High Performance 6530 Grinder Mixer Hammermill



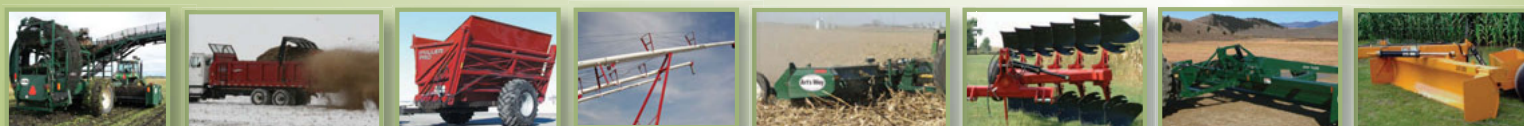
Art's Way Manufacturing Co., Inc.
PO Box 288 • Armstrong, IA 50514
(712) 864-3131 • Fax (712) 864-3154
sales@artsway-mfg.com
www.artsway-ag.com

Art's Way Manufacturing Co., Inc. reserves the right to change design or specifications without notice. Information contained herein is general and is not intended for specific application purposes. Photographs contained herein may be displayed with safety shields and/or guards removed to show mechanical functions only. AW6530-815

Portable Feed Grinding
and Mixing System

www.artsway-ag.com

meeting your needs in the farmyard and feedlot



MORE TOP PERFORMING ART'S WAY PRODUCTS

A blend of tradition, quality and exceptional performance

It's not just the largest in the industry, it is also the best and most productive grinder on the market today. The portable 6530 grinder mixer from Art's Way features a gigantic 165-bushel tank with a one-piece 26 inch hammermill. This 4 ton mixer is easily configured to meet the needs of your specific livestock operations, and includes a multitude of new ideas and improvements that originated from the experience of owners of previous models.

Faster unloading

The 10-inch diameter unload system has increased the discharge rate by **up to 50%** to drastically reduce time and labor costs. All unload discharge augers are run by hydraulic orbit motors.

Bigger, better discharge

Move more feed faster, with bigger, better discharge capabilities — increased gate opening, longer 12 ft. discharge auger tube and additional 60° height setting on discharge auger tube cylinder.



The **6530 grinder mixer*** boasts a fully self-contained hydraulic system operated by a wireless remote to control: raise/lower and swing of the discharge auger; open/close of the tank discharge gate; plus start and stop operation of the unload system.

*Tractor operated hydraulics also available.



Industry-leading productivity

- 165 bu. — highest capacity available
- 26" one-piece hammermill
- 10" diameter discharge system
- up to 50% faster unloading
- Self-contained hydraulics
- Wireless remote operation
- 96 hardened hammers, 4-way reversible
- 540 or 1000 RPM



26 inch one-piece hammermill design with 96 4-way reversible knives. Provides a more consistent grind for improved feed rations. Exceptional grinding capacity.

Take control: improve feed grinding with upper and lower wear plates. This allows using a larger screen reducing draw on tractor HP. In addition, the wear plates are replaceable.



Air system

Air system helps increase filtering and reduce dust.



Positive belt drive

Six double V-belts and new tension idler provides positive drive to the 26 in. hammermill.

Wireless remote operation



Self contained hydraulics

Fully self-contained hydraulic system with wireless remote operations.



Hydraulic lift cylinder

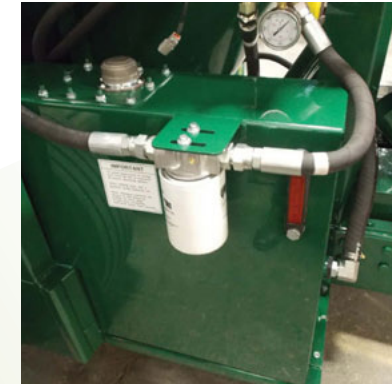
Hydraulic lift cylinder for ease of use and less maintenance. Wireless remote control operation.



Wireless tank gate

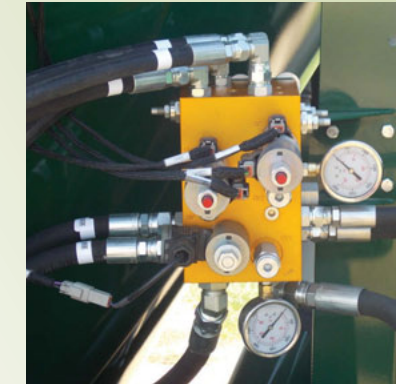
Electric, wireless tank gate opens wide to accommodate increased flow.

High performance capabilities



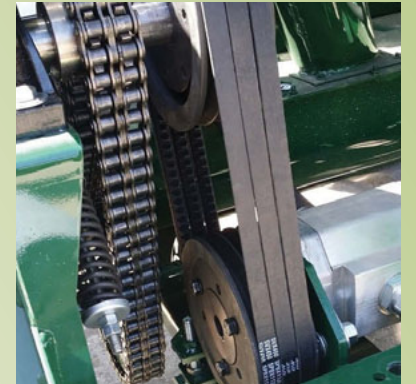
Large 36 gallon hydraulic tank

Dissipates heat, decreasing fluid temperatures which maximizes tractor HP. Sight glass level and temperature gauge provides visual indication of oil levels and temperature.



Consolidated hydraulic valve bank with soft start

Provides smooth operation and easy hydraulic adjustments in one place. Pressure gauges for better monitoring/control of hydraulics.



Smooth operating drive system

Belt driven hydraulic pump allows smooth quiet operation with less wear on machine.